

# **LW SERIES**

## **ROTARY CUTTER OWNERS MANUAL**

**LW 4240      LW440**

**LW540      LW640**

**K38**

## SAFETY PRECAUTIONS

DUE TO THE TYPE OF PERFORMANCE FOR WHICH THIS MACHINE WAS DESIGNED, THE OPERATOR SHOULD BE VERY CAREFUL AND PRACTICE ALL SAFETY PRECAUTIONS DURING OPERATION. BEING OF BASIC DESIGN THROUGHOUT THE FARM EQUIPMENT INDUSTRY, ROTARY CUTTERS HAVE FAST MOVING BLADES THAT CAN THROW OBJECTS THAT THE OPERATOR RUNS OVER. IT IS POSSIBLE TO DO SERIOUS INJURY TO YOURSELF OR TO OTHERS, IF YOU FAIL TO READ AND PRACTICE THE FOREGOING SAFETY RULES. ONLY EXPERIENCED AND TRAINED OPERATORS WITH A THOROUGH UNDERSTANDING OF THE RESPONSIBILITIES AND LIMITATIONS OF THIS MACHINE SHOULD OPERATE IT.

1. IMPORTANT READ AND BECOME FAMILIAR WITH THE INSTRUCTIONS ON THE ROTARY CUTTER DECALS. THESE DECALS HAVE BEEN PLACED AT VARIOUS PLACES ON THE MACHINE TO REMIND YOU TO BE CAUTIOUS FOR YOUR PROTECTION, AS WELL AS OTHERS.
2. BEFORE OPERATING THE ROTARY CUTTER, CAREFULLY INSPECT THE AREA ON WHICH THE ROTARY CUTTER WILL BE USED. BE SURE TO REMOVE ALL OBJECTS THAT MIGHT BE THROWN BY THE ROTATING BLADES. ALSO, NOTE ANY GULLIES, DITCHES, OR ROUGH TERRAIN WHEN YOU ARE INSPECTING THE AREA.
3. CHECK THE MACHINE FREQUENTLY TO BE SURE THERE ARE NO LOOSE BOLTS, AND THAT SNAP RINGS ARE IN PLACE.
4. ALWAYS USE, AND MAINTAIN IN PLACE. ALL PTO GUARDS FURNISHED WITH THE ROTARY CUTTER, AS WELL AS THE GUARDS FURNISHED WITH THE TRACTOR.
5. DISENGAGE THE PTO, AND CUT OFF THE TRACTOR ENGINE BEFORE LEAVING THE TRACTOR SEAT.
6. IT IS RECOMMENDED THAT THE TRACTOR BE EQUIPPED WITH A ROLLBAR, AND A SEAT BELT. THIS IS THE OPERATOR'S OWN RESPONSIBILITY FOR HIS OWN SAFETY.
7. IT IS NOTED THAT ON TRACTORS WITHOUT "LIVE" PTO, THE CENTRIFUGAL FORCE OF THE ROTATING BLADES WILL TEND TO FORCE THE TRACTOR IN THE DIRECTION OF TRAVEL. THIS CAN RESULT IN AN ACCIDENT, OR INJURY, IF THE OPERATOR DOES NOT REDUCE HIS SPEED BEFORE TURNING, OR ALLOWING ADEQUATE DISTANCE BETWEEN THE TRACTOR AND TURNING POINT, OR OBSTACLE. (YOUR DEALER HAS FREE-WHEEL, OVER-RUNNING COUPLERS, TO CURTAIL THE CENTRIFUGAL FORCE- THE COUPLERS SERVE AS AN ADDED SAFETY DEVICE).
8. THE BLADES, AND PTO SHAFT WILL CONTINUE TO ROTATE FOR A SHORT TIME AFTER THE TRACTOR PTO POWER IS CUT OFF. BE SURE ALL ROTATION HAS STOPPED BEFORE ATTEMPTING TO SERVICE THE MACHINE, OR APPROACH IT FOR ANY REASON.
9. NEVER CRAWL UNDER THE MACHINE FOR ANY REASON. IT COULD FALL ON YOU. NEVER MANUALLY FEED THE MACHINE FOR ANY REASON. NEVER REACH YOUR HANDS, OR FEET UNDER THE DECK OF THE CUTTER WITHOUT FIRST BEING SURE THAT THE BLADES HAVE CEASED ALL MOVEMENT, AND ALL POWER IS CUT OFF.
10. CHAIN GUARDS (OPTIONAL EQUIPMENT) SHOULD BE ADDED TO THE MACHINE WHEN IT IS USED IN AREAS WHERE PEOPLE, ANIMALS, OR PROPERTY MAY BE HIT, OR ENDANGERED BY THROWN OBJECTS. THE RAPIDLY ROTATING BLADES MAY STRIKE, AND THROW WIRE, STICKS CHAIN GUARDS, IT IS RECOMMENDED THAT THE OPERATOR BE SURE TO KEEP ALL PERSONS, AND ANIMALS FAR ENOUGH AWAY FROM THE OPERATING AREA, TO BE COMPLETELY CLEAR OF THROWN OBJECTS.
11. NEVER ALLOW RIDERS ON MACHINE, OR TRACTOR.
12. TRANSPORT MACHINE AT SAFE SPEED.

### ASSEMBLY AND SET-UP INSTRUCTIONS

- A. SET UP A-FRAME AND POSITION HITCH PINS IN PROPER POSITION. BE SURE TO USE LOCK WASHERS AND TIGHTEN BOLTS SECURELY, ATTACH FLEX CHAIN BRACE TO A-FRAME THE FASTEN CHAIN END ON TAIL WHEEL ADJUSTMENT BRACKET.
- B. REMOVE THE SNAP RING FROM IN-PUT SHAFT ON GEAR BOX, ATTACH THE PTO SHAFT AND INSTALL SHEAR BOLT. BE SURE TO REPLACE THE SNAP RING TO GEAR BOX IN-PUT SHAFT. THE SNAP RING WILL HOLD THE PTO SHAFT IN PLACE IF THE SHEAR BOLT IS SHEARED.
- C. CHECK ALL BOLTS INCLUDING GEAR BOX MOUNTING BOLTS, BLADE BOLTS AND BLADE CARRIER BOLT.
- D. ADJUST THE TAIL WHEEL BRACKET TO LEVEL THE ROTARY CUTTER OR OBTAIN DESIRED CUTTING POSITION.
- E. LUBRICATE GEAR BOX, TAIL WHEEL HUB, TAIL WHEEL SPINDLE, PTO U-JOINTS.
- F. ATTACH ROTARY CUTTER TO THE TRACTOR.



4

## STARTING FOR THE FIRST TIME

1. IF EVERYTHING IS IN PLACE, AND THE ROTARY CUTTER IS PROPERLY CONNECTED TO THE TRACTOR, START THE TRACTOR, AND RAISE THE ROTARY CUTTER SLOWLY, WATCHING THE PTO SHAFT, RAISE AND LOWER THE ROTARY CUTTER UNTIL YOU HAVE POSITIONED THE PTO SHAFT TO THE SHORTEST TELESCOPING POINT. THIS POSITION WILL CHECK THE PTO SHAFT TO MAKE IT IS NOT TOO LONG. WITH THE SHAFT POSITIONED AT IT'S SHORTEST LENGTH, THE TWO TELESCOPING SHAFTS SHOULD LACK TWO(2) INCHES MEETING. NOW, CHECK THE PTO SHAFT TO BE SURE THE PTO SHAFT IS NOT TOO SHORT. POSITION THE ROTARY CUTTER SO THAT THE PTO SHAFT WILL BE AT IT'S LONGEST POSITION. AT THIS POSITION, THE TWO TELESCOPING SHAFTS SHOULD ENGAGE AT LEAST SIX (6) INCHES. BE SURE THE PTO CLEARS THE FRONT OF THE CUTTER DECK, WHEN CUTTER IS RAISED. IF IT DOES NOT CLEAR, RE-ADJUST THE TOP-LINK ON YOUR TRACTOR, TO CORRECT THIS PROBLEM. YOU MAY WANT TO SET THE STOP ON YOUR HYDRAULIC CONTROL LEVER, SO THAT THE CUTTER WILL NOT ACCIDENTLY BE RAISED TOO HIGH. NOW, ENGAGE THE PTO, SLOWLY, LET THE ROTARY CUTTER RUN SLOWLY FOR SEVERAL SECONDS AND GRADUALLY INCREASE THROTTLE TO OPERATING SPEED. WATCH CAREFULLY FOR SIGNS OF EXCESSIVE VIBRATION, OR UNUSUAL NOISES. IF ANY ARE NOTICED, DISENGAGE PTO, CUT OFF TRACTOR IMMEDIATELY, WAIT FOR COMPLETE STOP OF ALL MOVING PARTS, AND INVESTIGATE CAUSE. A NEW GEAR BOX MAY BE NOISY AT FIRST, BUT USUALLY A FEW HOURS USE WILL MESH THE GEARS, AND CREATE A QUIETER, SMOOTHER OPERATION.

WE SUGGESTED THAT YOU GET THE FEEL OF YOUR ROTARY CUTTER ON OPEN FAMILIAR GROUND. REMEMBER THAT THE CENTRIFUGAL FORCE OF THE ROTARY BLADES AND CARRIER CAN KEEP PUSHING YOU FORWARD, EVEN AFTER YOU HAVE DISENGAGED YOUR CLUTCH, UNLESS YOUR TRACTOR IS EQUIPPED WITH LIVE PTO OR AN OVER-RUNNER. THEREFORE, APPROACH OBSTACLES WITH CAUTION.

\*\*\*\* IF IT IS DETERMINED THAT THE PTO SHAFT IS EITHER TOO LONG OR TOO SHORT, FOR YOUR TRACTOR, SEE YOUR DEALER FOR CORRECT SHAFT LENGTHS. THIS IS NOT A FREQUENT PROBLEM, HOWEVER, THE CORRECT SHAFT LENGTH SHOULD BE CHECKED TO AVOID DAMAGE TO THE PTO SHAFT, OR OTHER COMPONENTS.

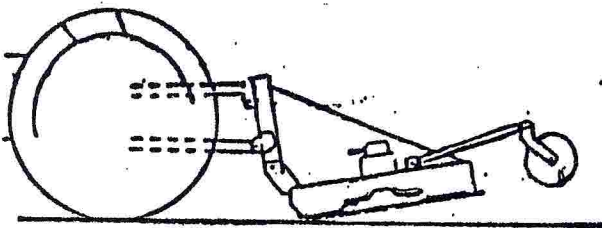
## OPERATION

THE BIG BEE ROTARY CUTTERS ARE DESIGNED FOR TRACTORS RANGING FROM 16 HP. BE SURE TO MATCH THE SIZE AND MODEL OF CUTTER TO YOUR TRACTOR FOR SAFETY AND RELIABILITY.

1. CHECK GEAR BOX FOR LUBRICANT,
2. CHECK ALL LUBRICATION POINTS ON PTO SHAFT AND TAIL WHEEL.
3. BE SURE ALL BOLTS ARE TIGHT AND SNAP RINGS ARE IN PLACE.
4. BE SURE THE ROTARY CUTTER IS PROPERLY MOUNTED ON TRACTOR.
5. ADJUST AND LEVEL ROTARY CUTTER FOR DESIRED CUTTING HEIGHT.

### ADJUSTING LEVEL OF CUTTER ON YOUR TRACTOR

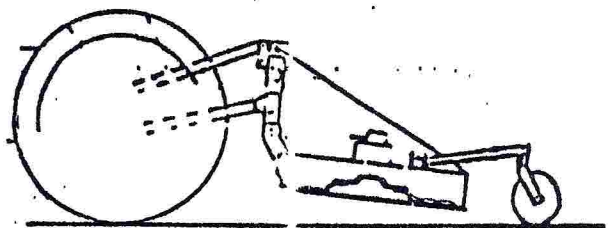
Cutter Too Low In Front



INCORRECT

BLADE TOO HIGH ON SIDES CAUSING SKIPPING AND UNEVEN CUTTING, BLADES BECOME BADLY WORN. BLADE STRIKING GROUND CAUSING SLIP CLUTCH TO SLIP EXCESSIVELY.

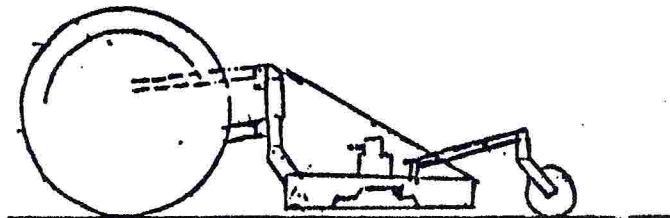
Cutter Too Low In Rear



INCORRECT

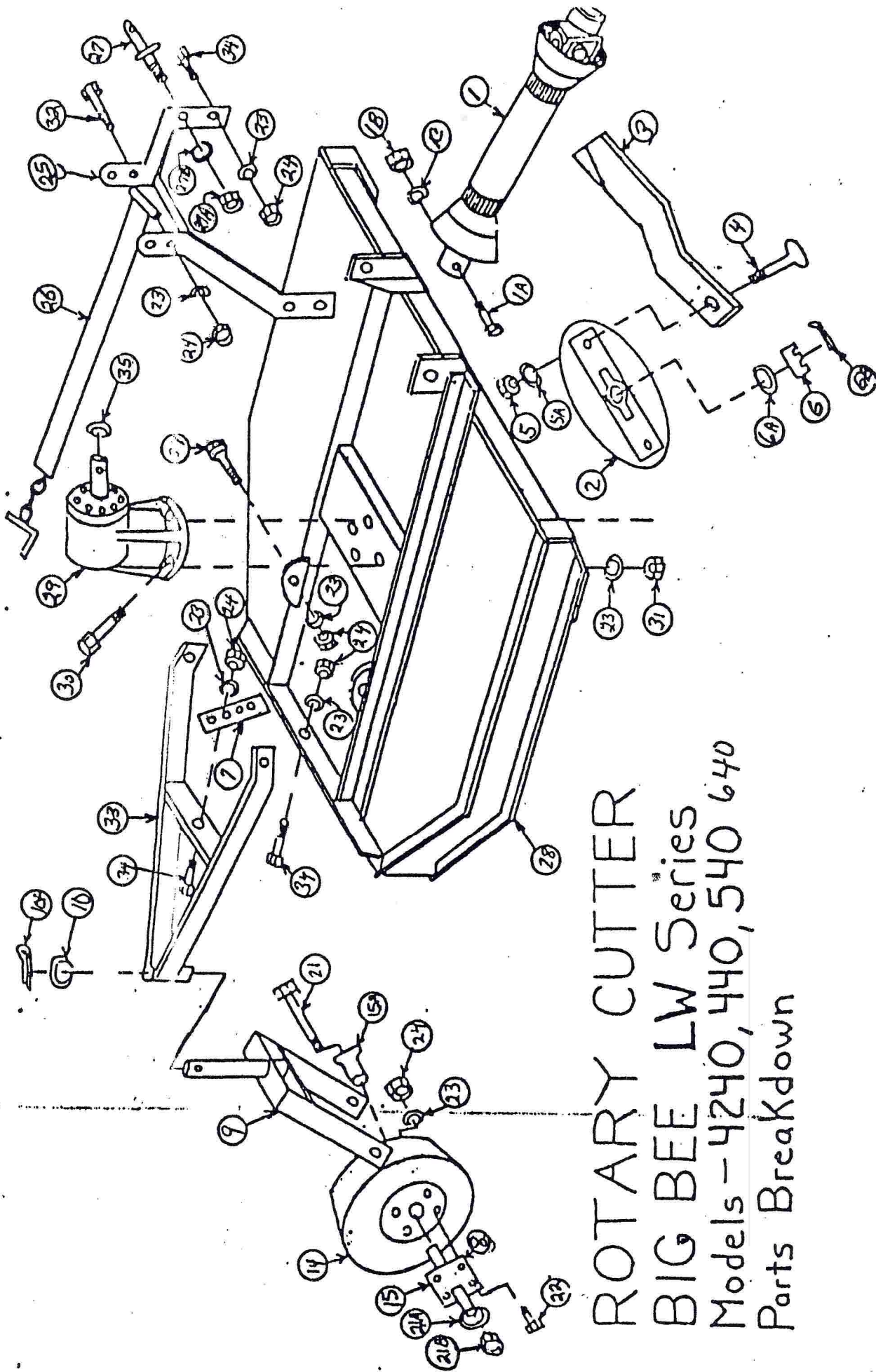
EXCESSIVE WEAR AND TEAR ON ON TAILWHEEL, REAR SKIRT DRAGGING CAUSING BALLING UP PROBLEMS. BLADE TOO HIGH ON SIDES CAUSING SKIPPING AND UNEVEN CUTTING

Cutter Level



CORRECT

BLADE CUTTING EVENLY WITH GRASS BEING SPREAD EVENLY.



ROTARY CUTTER  
 BIG BEE LW Series  
 Models - 4240, 440, 540, 640  
 Parts Breakdown



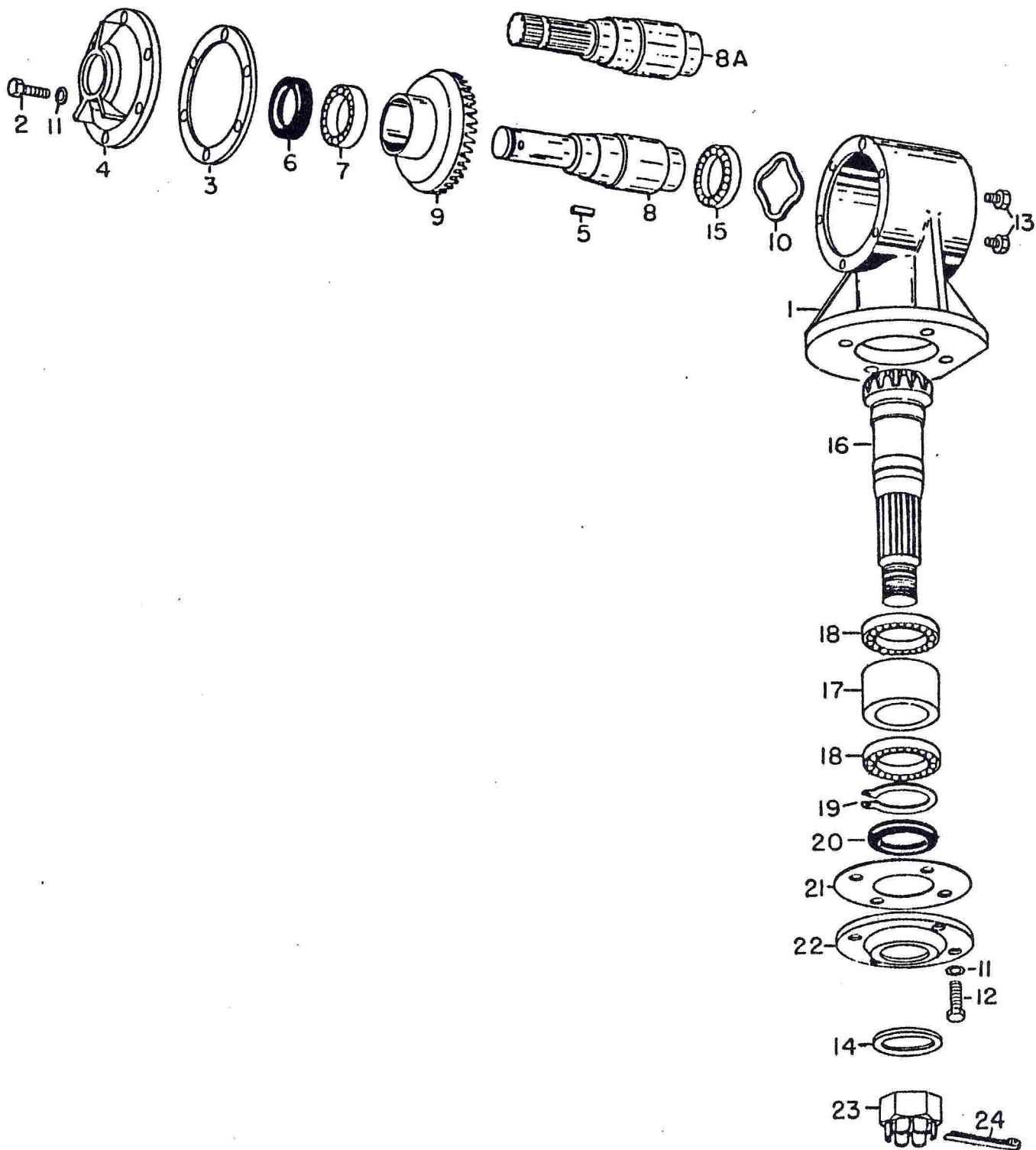
## PARTS BREAKDOWN FOR LW Series

<u>REF.#</u>	<u>PART#</u>	<u>DESCRIPTION</u>	<u>QTY.</u>
1	8017453	PTO SHAFT COMPLETE LW540	1
1	80110130A	PTO SHART COMPLETE LW4240,LW440	1
1A	HW8077	1/2" X 3" GRADE 2 SHEAR BOLT	1
1B	HW1003	SHEAR BOLT NUT 1/2" USS	1
1C	HW1022	SHEAR BOLT WASHER 1/2" LOCK	1
2	621	BLADE CARRIER COMPLETE	1
2A	624	ROUND DISC	2
2B	623	BAR	2
2C	622	12 SPLINE HUB	2
3	628	BLADE LW 4240	2
3	629	BLADE LW 440	2
3	630	BLADE LW 540	2
3	6400	BLADE LW 640	2
4	632	BLADE BOLT	2
5	633	BLADE BOLT NUT 1 1/8" 12 SAE	2
5A	HW663A	WASHER, BLADE BOLT, 1 1/8 LOCK	2
6	634	NUT, BOTTOM SHAFT (STUMP JUMPER)	1
6A	HW634A	WASHER, BOTTOM SHAFT	1
6B	HW634B	COTTER KEY, BOTTOM SHAFT	1
7	643	BRACKET, TAIL WHEEL ADJUSTER	1
8	HW1012	GREASE FITTING	1
9	645	FORK, TAIL WHEEL	1
10	647	WASHER, FORK TAIL WHEEL	1
10A	HW648	COTTER KEY, FORK TAIL WHEEL	1
14	655	TIRE AND RIM, TAIL WHEEL	1
15	656	HUB, TAIL WHEEL (COMPLETE W/BUSHING)	1
21	663	AXLE, TAIL WHEEL	
21A	663A	WASHER, TAIL WHEEL	
21B	663B	NUT, TAIL WHEEL AXLE	
22	HW1056	5/8" X NC X 1" HEX BOLT	4
23	HW1057	5/8" LOCK WASHER	11
24	HW1058	5/8" NC HEX NUT	11
25	677	A-FRAME, WELDED ASSY. LW440,LW540,LW640	1
25	672	2 PIECE A-FRAME	2
25	670	A-FRAME, 2 PIECE, LW 4240	1
26	7270	CHAIN BRACE, LW 640	1
26	6770	CHAIN BRACE FOR LW 4240	1
26	6780	CHAIN BRACE FOR LW440	1
26	6781	CHAIN BRACE FOR LW540	1
26	671	BRACE, A FRAME "0"42	2
26	678	BRACE A-FRAME LW440	2
26	679	BRACE, A FRAME LW 540	2
27	HW1007	7/8" DRAW PIN	2
27A	HW1009	7/8" NC HEX NUT	2
27B	HW1008	7/8" LOCK NUT	2
28	687	MAIN BODY-48" LW440	
28	688	MAIN BODY-60" LW540	
28	689	MAIN BODY-72" LW640	
28	686	MAIN BODY- LW 4240	
29	6882-1030	BW GEAR BOX	

30	HW6882A	5/8" X 2" GRADE 5 SAE HEX BOLT	4
31	HW6882B	5/8" SAE HEX BOLT	4
32	HW6884	5/8" NC X 4 1/2" GRADE 2 HEX BOLT	1
33	641	YOKE, TAIL WHEEL LW 4240	1
33	642	YOKE, TAIL WHEEL LW540, LW440	
33	642	YOKE, TAIL WHEEL, LW640	
34	HW6883	5/8" NC X 2" GRADE 2 HEX BOLT	6
35	HW1061	SNAP RING, PTO SHAFT RETAINS	1



(COMER) GEAR BOXES -

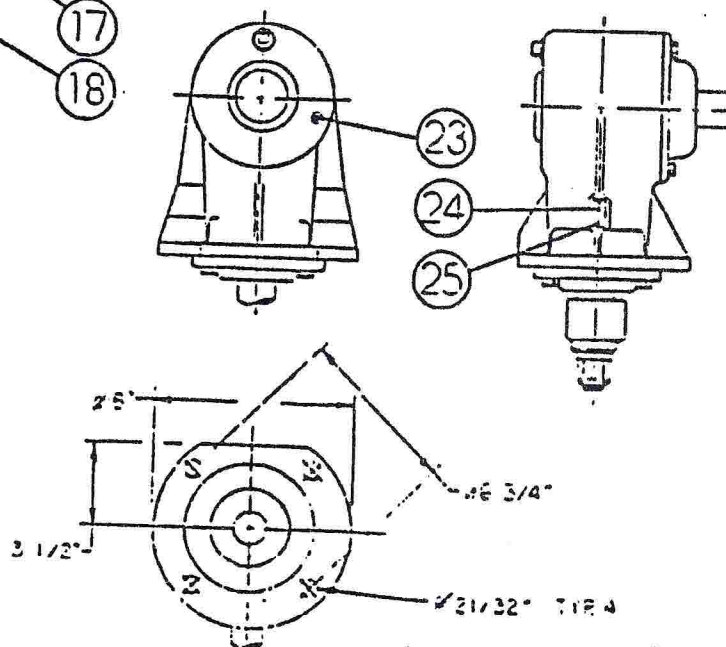
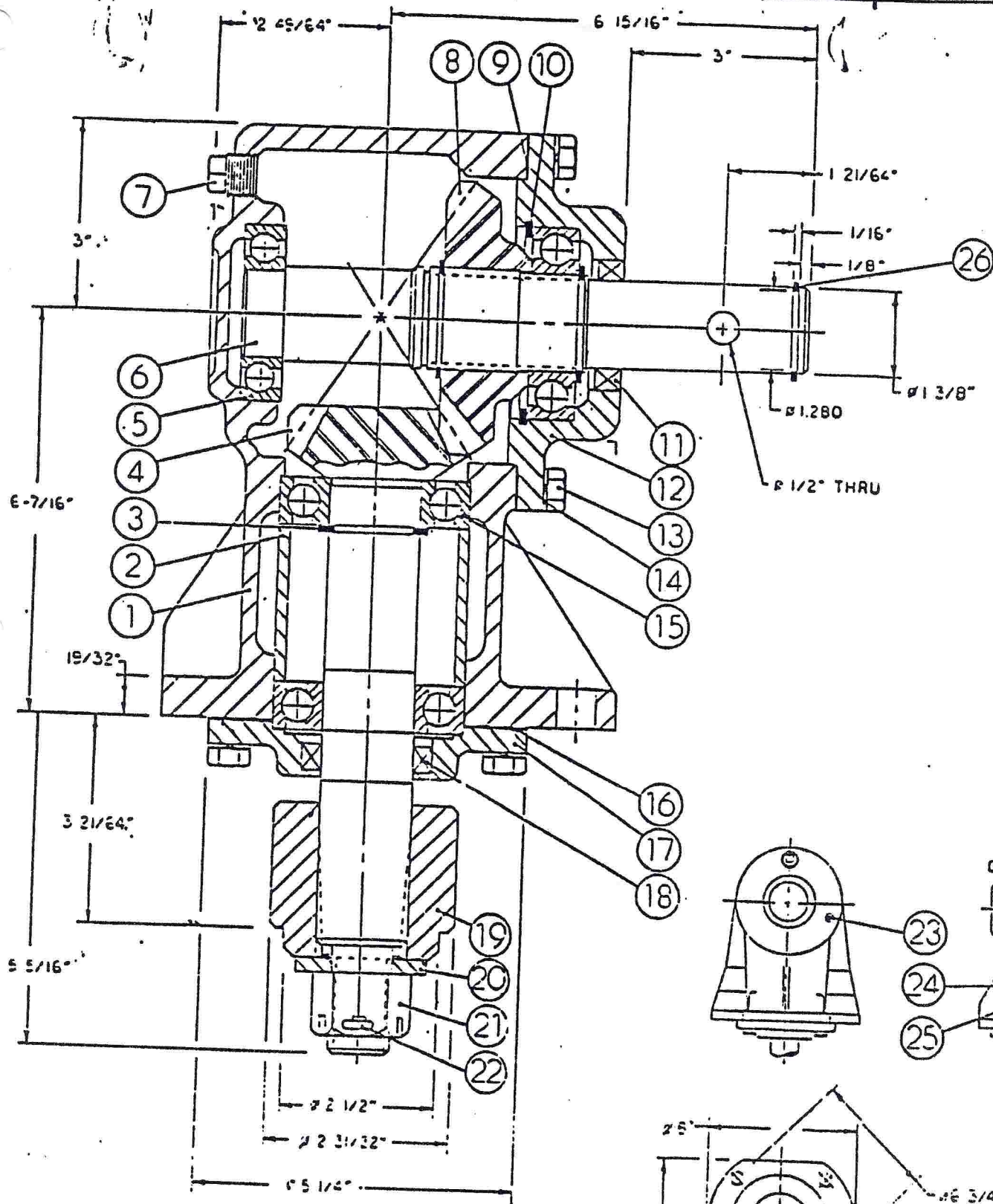


(COMER) GEAR BOXES -

REF. NO.	PART NUMBER	DESCRIPTION	NO. REQ.	SERIAL NUMBER
		GEAR BOX ASSEMBLY - 42 Inch .....	1	
		GEAR BOX ASSEMBLY - 48, 60 and 72 Inch .....	1	
		GEAR BOX ASSEMBLY - Optional on 60 and 72 Inch .....	1	
		Rotary Cutters With Slip Clutch		
1	0.119.0302	HOUSING - Order Gear Box Assembly .....	1	
2	*	CAPSCREW - M10-1.25x30 .....	6	
3	0.119.7200	GASKET - Front Cover .....	1	
4	0.119.1300	COVER - Front Cap .....	1	
5	8.4.1.00495	KEY - 12x8x35 .....	1	
6	8.7.3.00028	OIL SEAL - Front Cover - 35x52x7 .....	1	
7	8.0.1.00870	BEARING - Ball .....	1	
8	0.119.2000	SHAFT - Input - Rotary Cutters Without Slip Clutch - All Models .....	1	
9	0.119.5000	GEAR - Input Shaft - 40, 60 and 72 Inch .....	1	
10	8.5.6.00519	RING - Take-Up - 61x51x0.5 .....	1	
11	*	LOCKWASHER - External Tooth - M10 .....	10	
12	*	CAPSCREW - M10-1.25x22 .....	4	
13	8.6.5.00303	OIL PLUG .....	2	
14	*	WASHER - M24 .....	1	
15	8.0.1.00010	BEARING - Ball .....	1	
16	0.119.6201	PINION - Output Shaft - 48, 60 and 72 Inch .....	1	
17	0.119.7100	SPACER - Output Shaft Bearings .....	1	
18	8.0.1.00871	BEARING - Ball .....	2	
19	8.5.1.00029	RING - Retaining - External - M40 .....	1	
20	8.7.1.00517	OIL SEAL - Bottom Cover .....	1	
21	0.119.7201	GASKET - Bottom Cover .....	1	
22	0.119.1301	COVER - Bottom Cap .....	1	
23	8.2.2.00515	NUT - Castle - M24-2.0 .....	1	
24	*	COTTER PIN - M5x50 .....	1	

\*Common Hardware - Purchase Locally  
(Grade 5 Where Applicable)

# Omni Gearbox



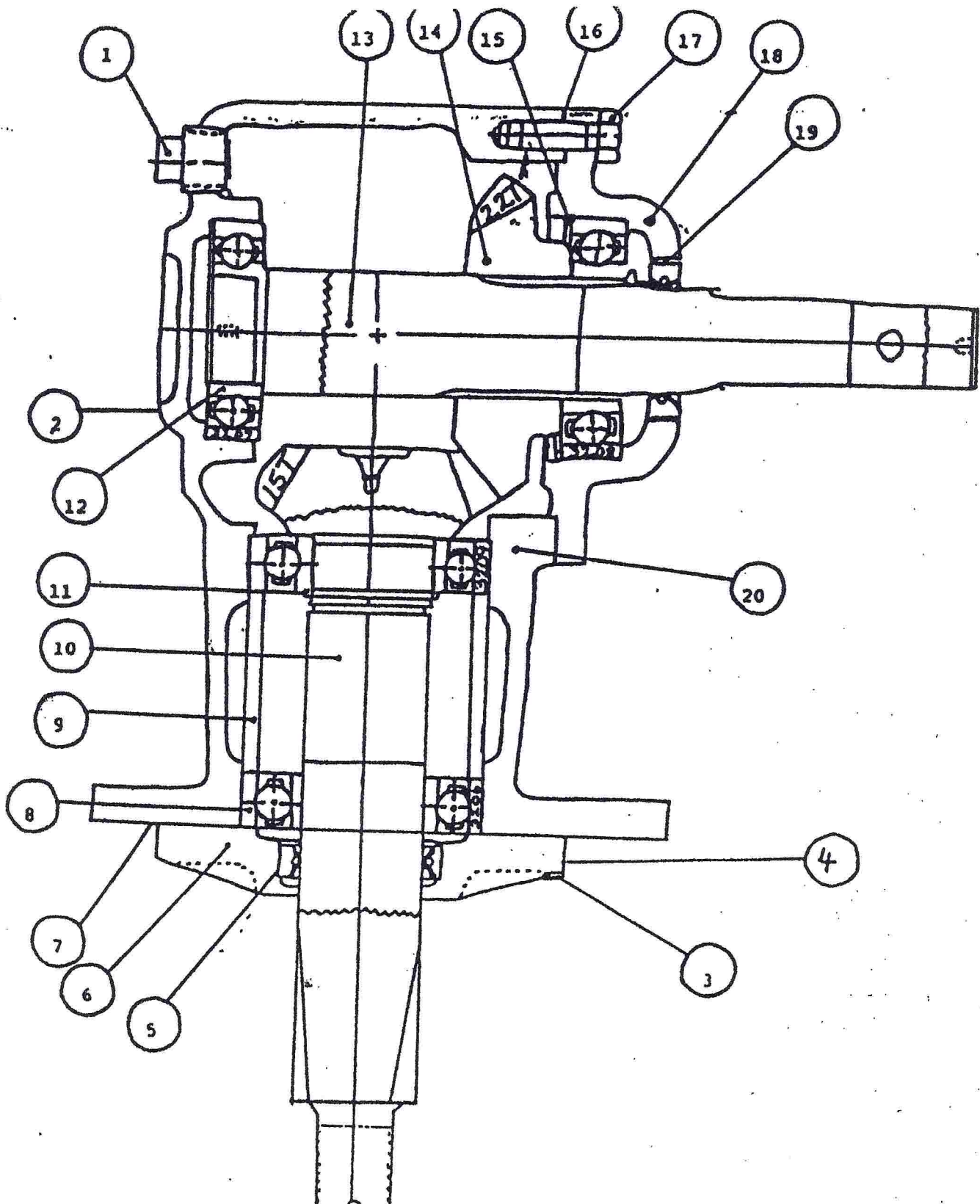


12

OMNI GEAR BOX PARTS LIST  
40 H.P. GEAR BOX BREAKDOWN

REFERENCE NUMBER	PART NUMBER	DESCRIPTION	NUMBER REQUIRED
1	010001	HOUSING	1
2	070000	SPACER	2
3	200000	RETAINING RING	3
4	030002	PINION 15T	1
5	050006	BALL BEARING 207K	1
6	040040	INPUT SHAFT	1
7	140000	PIPE PLUG	1
8	030003	GEAR 22T	1
9	070002	GASKET	1
10	200001	RETAINING RING	1
11	060060	SEAL	1
12	020002	CAP	1
13	110000	CAP SCREW	10
14	130002	LOCKWASHER	10
15	060007	BALL BEARING 208K	3
16	070001	GASKET	1
17	020003	CAP	1
18	060061	SEAL	1
19	210000	BLADE HUB	1
20 & 21	120050	HEX NUT & FLAT WASHER	1
22	100001	COTTER PIN	1
23	140001	PIPE PLUG	1
24	190000	I.D. TAG	1
25	240001	RIVET	2
26	200010	RETAINING RING	1

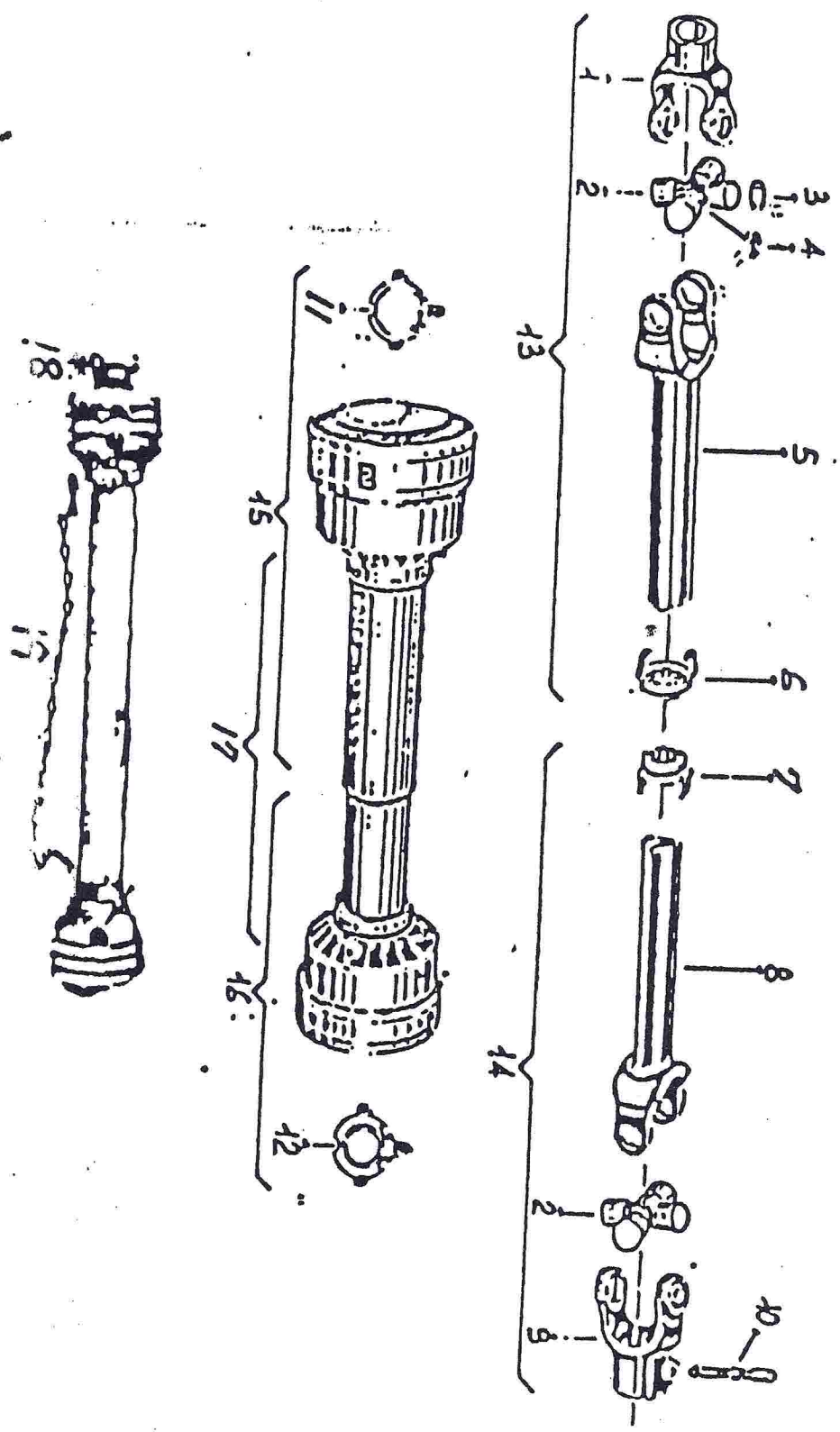
# 40 HP GEARBOX (SMOOTH INPUT SHAFT)



# 40 HP GEAR BOX BREAKDOWN

<u>REFERENCE NUMBER</u>	<u>PART NUMBER</u>	<u>DESCRIPTION</u>	<u>NUMBER REQUIRED</u>
1	03-04-101-12	PIPE PLUG (FILL) (1/2-14)	1
2	03-04-101-09	PIPE PLUG (CHECK) (1/8-27)	1
3	03-02-103-05	CAPSCREW 3/8" X 1"	6
4	03-03-102-08	LOCKWASHER	10
5	05-04-105-33	BOTTOM OIL SEAL	1
6	10-30-104-11	BOTTOM CAP, BEARING RETAINER	1
7	WA-48-12	GASKET	1
8	04-03-104-03	BEARING(3208)	3
9	10-30-107-01	SPACER	1
10	WA50-SE	OUTPUT PINION	1
11	03-05-101-09	RETAINING RING	1
12	04-03-104-02	BEARING(3207)	1
13	10-30-103-02	INPUT SHAFT SHEAR PIN	1
14	10-30-106-11	INPUT GEAR	1
15	10-40-143-01	RETAINER RING	1
16	WA50-10-10A	SHIM (.004)	AS REG.
17	03-002-103-04	CAPSCREW 3/8" X 1 1/4"	4
18	10-30-105-11	SIDE HOUSING (FRONT CAP)	1
19	05-02-106-06	OIL SEAL (TOP) (N450135)	1
20	10-30-102-11	HOUSING	1





BONDIOLI PARTS APPLICATION TO PTO SHAFTS ON BIG BEE ROTARY CUTTERS  
(LW SERIES)

REF.	PART NO.	DESCRIPTION	APPLICATION			
			K38	LW440 LW4240	LW540	LW640
1	63481	IMPLEMENT YOKE	*		*	*
2	4.41	BEARING & CROSS KIT	*		*	*
3	4.11	CIRCLIP	*		*	*
4	2.44	GREASE ZERK	*		*	*
5	204.61-465	YOKE & OUTER TUBE	*			
5	204.61-590	YOKE & OUTER TUBE			*	
5	204.61-740	YOKE & OUTER TUBE				*
6	3.17.02	RING for OUTER TUBE	*		*	*
7	3.18.02	RING for INNER TUBE	*		*	*
8	204.62-490	YOKE & INNER TUBE	*			
8	204.62-615	YOKE & INNER TUBE			*	
8	204.62-765	YOKE & INNER TUBE				*
9	4.05.07	QUICK RELEASE YOKE	*		*	*
10	1.08.25.01	RELEASE YOKE PIN	*		*	*
11	4.G5.02	LOCK for OUTER SHIELD	*		*	*
12	4.G6.02	LOCK for INNER SHIELD	*		*	*
13	M12664.70	COMPLETE IMPLEMENT HALF	*			
13	M12666.70	COMPLETE IMPLEMENT HALF			*	
13	M12663.80	COMPLETE IMPLEMENT HALF				*
14	M12664.71	COMPLETE TRACTOR HALF	*			
14	M12666.71	COMPLETE TRACTOR HALF			*	
14	M12663.81	COMPLETE TRACTOR HALF				*
15	3.75.420	OUTER HALF SHIELD	*			
15	3.75.545	OUTER HALF SHIELD			*	
15	3.75.695	OUTER HALF SHIELD				*
16	3.74.420	INNER HALF SHIELD	*			
16	3.74.545	INNER HALF SHIELD			*	
16	3.74.695	INNER HALF SHIELD				*
17	M12664Z	COMPLETE SHIELD with LOCKS & RINGS	*			
17	M12666Z	COMPLETE SHIELD with LOCKS & RINGS			*	
17	M12663Z	COMPLETE SHIELD with LOCKS & RINGS				*
18	M14251	COMPLETE PTO SHAFT 32" SERIES #4	*			
18	M14255	COMPLETE PTO SHAFT 37" SERIES #4			*	
18	M14252	COMPLETE PTO SHAFT 43" SERIES #4				*
19		STAY CHAIN	*		*	*

17

## GENERAL MAINTENANCE

1. CHECK OIL LEVEL IN GEAR BOX PERIODICALLY. KEEP LEVEL UP TO CHECK PLUG. USE SAE 90 OR SAE 140 TRANSMISSION OIL. USE CAUTION NOT TO OVER FILL.
2. LUBRICATE UNIVERSAL JOINT ON PTO SHAFT EVERY FEW HOURS OF USE. KEEP PTO SHAFT FREE OF DIRT AND FOREIGN MATERIALS SO THAT IT WILL TELESCOPE FREELY TO AVOID DAMAGE TO YOUR TRACTOR OR ROTARY CUTTER.
3. LUBRICATE TAIL WHEEL.
4. KEEP BLADES SHARP. WHEN REPLACING WORN BLADES, BE SURE TO REPLACE IN PAIRS TO MAINTAIN ROTARY BALANCE.
5. KEEP ALL BOLTS TIGHTENED PROPERLY.

\*\*\*\*\*

## WARRANTY

3 WARRANTY EACH NEW BIG BEE ROTARY CUTTER AGAINST DEFECT IN MATERIAL OR WORKMANSHIP FOR A PERIOD OF 90 DAYS OR A REASONABLE PERIOD OF TIME DEPENDANT UPON THE TYPE OF USE OF THE MACHINE.

IN THE EVENT IT IS NECESSARY TO REPLACE OR REPAIR AND PART(S) DURING THE WARRANTY PERIOD GO TO YOUR DEALER WITH THE DEFECTIVE PART(S) AND HE WILL ASSIST YOU IN SECURING THE NEEDED REPLACEMENT, OR RETURN THE DEFECTIVE PART(S) TO

DHE  
WARRANTY DIVISION  
P.O. BOX 140  
GOLDEN ROAD  
RED BAY, AL. 35582

NEITHER MANUFACTURER OR THE DEALER SHALL BE HELD RESPONSIBLE FOR LOSS OF USE OF THE MACHINE, LOSS OF TIME, INCONVENIENCE, COMMERCIAL LOSS OR CONSEQUENTIAL DAMAGES.

IN ORDER FOR YOUR BIG BEE ROTARY CUTTER TO BE COVERED BY OUR WARRANTY POLICY, THE EQUIPMENT REGISTRATION FORM ON THE BACK COVER MUST BE COMPLETED AND RETURNED WITHIN 10 (TEN) DAYS AFTER THE PURCHASE DATE.

THE WARRANTY POLICY IS NOT EFFECTIVE UNLESS THE EQUIPMENT REGISTRATION IS RECORDED IN OUR OFFICE.

\*\*\*\*\*



OWNER REGISTRATION

\*\*\*\*\*

OWNERS NAME: \_\_\_\_\_

STREET ADDRESS: \_\_\_\_\_

CITY: \_\_\_\_\_ COUNTY: \_\_\_\_\_ STATE: \_\_\_\_\_ ZIP: \_\_\_\_\_

\*\*\*\*\*

PURCHASED FROM: \_\_\_\_\_

STREET ADDRESS: \_\_\_\_\_

CITY: \_\_\_\_\_ COUNTY: \_\_\_\_\_ STATE: \_\_\_\_\_ ZIP: \_\_\_\_\_

DATE PURCHASED: \_\_\_\_\_

\*\*\*\*\*

DATE: \_\_\_\_\_ OWNER'S SIGNATURE: \_\_\_\_\_

MODEL: \_\_\_\_\_

EQUIPMENT NAME: \_\_\_\_\_

SIZE: \_\_\_\_\_

\*\*\*\*\*