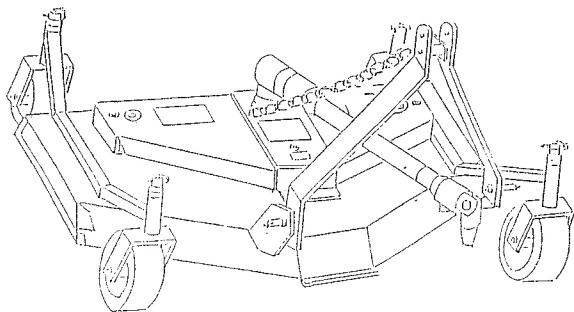


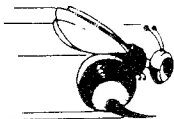
BIG BEE Finishing Mower



Owner's Manual and Parts Book

BB FM48	48"
BB FM60	60"
BB FM72	72"
BB FM84	84"

BIG



BEE

FEATURES:

- Cutting Width-48", 60", & 72"
- Number of Blades-3
- Single Belt-Industrial Type
- Gear Box-40 HP, 1:1, 92 Increaser
- Gauge Wheels- Four Adjustable- 360 Swivel Mounted (Front & Rear)
- Easy Access Hinged Service & Maintenance Shield Bolted Deck Sides
- Spindles-Three- Mounted in Greaseable Roller Bearings
- PTO Shaft Series 4-32" Long
- Cutting Height- 2-2 1/2"

GENERAL MAINTENANCE

1. Check oil level in gear box periodically. Keep level up to check plug level. Use EP 90 or EP 140 transmissions oil . Use Caution not to over fill.
2. Lubricate at all grease zerks every few hours of use.
3. Keep PTO Shaft free of dirt and foreign materials so that it will telescope freely to avoid damage to your tractor or mower. Keep all shields on PTO.
4. Keep good blades on mower. When replacing worn blades be sure to replace in sets to maintain rotary balance.
5. Blade bolts on this finishing mower are left hand bolts.
6. Keep all bolts tightened properly.

RULES FOR SAFE OPERATION

1. Be aware that all mechanical or rotating equipment can do bodily injury if operator is not familiar with equipment and/or fails to follow instructions.
2. Know your controls and how to stop and cut off power quickly.
3. Read the Owner's Manual.
4. Do not allow children to operate the mower and tractor.
5. Do not allow adults to operate the mower and tractor without proper instructions.
6. Do not carry pets or passengers on tractor or mower.
7. Keep pets, children and adults at a safe distance when mower is in operation. Never allow bystanders to observe operation from a close distance.
8. Always wear substantial footwear. Do not wear loose clothing that could get caught in moving parts.
9. Keep your mind and your eyes on what you doing. Don't let other interests distract you.
10. Do not operate the tractor or mower unless operator is properly positioned in driver's seat of tractor.
11. Always get on and off tractor from the operator's left side. Be sure the power is off and the tractor is in park position before getting off of the tractor.
12. Walk over the area to be mown, to become familiar with the terrain, make sure area is cleared of all objects that might be picked up or thrown by mower.
13. Be sure all controls are in neutral position before starting engine.
14. Disengage power to equipment and stop tractor engine before leaving operator's position.
15. Disengage power to mower and stop tractor engine before making any adjustments, repairs, or cleaning the machine.
16. Disengage power to attachments when unit is not in use or is being transported.
17. Take all possible precautions when leaving the tractor or mower unattended.
Example: Remove power take-off shift, lower attachments, return drive control to neutral, set parking brake, stop engine, and remove the key.
18. Do not stop or start suddenly when going uphill or downhill. Mow up and downhill. Mow up and down face of slopes, never cross the face (Do not mow slopes with more than 15 degree grade).
19. Reduce speed on slopes and make turns gradually. **Exercise extreme caution!**
20. Never mow in wet or slippery grass when traction is unsure or at a speed which could cause a skid.
21. Do not drive too close to ditches, public roads, or creeks.
22. Use extreme precautions when moving around fixed objects to prevent the blades from striking them.
23. Never place hands or feet under mower when blades are rotating. Always keep hands and feet clear of any moving part of tractor or mower when running.
24. Be sure the mower is properly matched to the tractor. Consider size, weight, and horse-power requirements.
25. Watch for traffic when crossing or near roadways.
26. Handle tractor fuel with care.
 - A. Use approved fuel containers.

- B. Wipe up all spilled fuel.
- C. Do not run engine in enclosed area.
- 27. Keep the tractor and attachments in good operating condition. Keep safety devices in place.
- 28. Keep all nuts, bolts, and screws tight and be sure equipment is in safe working condition.
- 29. To reduce fire hazard, keep the engine free of grass clippings, leaves, or excessive grease.
- 30. When using the tractor with the mower - proceed as follows:
 - A. Mow only in daylight or in good artificial light.
 - B. Never make a cutting height adjustment while engine is running, if the operator must dismount to do so.
 - C. Shut the engine off when removing grass or unclogging.
 - D. Check the blade mounting bolts for proper tightness regularly.

CAUTION! REMOVE KEY FROM THE TRACTOR IGNITION BEFORE STARTING TO ASSEMBLE FINISHING MOWER.

UNPACKING (FIGURE 1)

Your Finishing Mower and all necessary parts are packed in one crate.

The contents in the crate consists of the following:

- A. Finishing Mower Deck Assembly
- B. A-Frame Brace
- C. Swivel Hitch (Partially Assembled)
- D. Three-Point A-Frame (Partially Assembled)
- E. Caster Wheels (4) (Assembled)
- F. Power Take-Off Shaft (PTO)

PREPARATION OF TRACTOR

- 1. Before beginning to assemble the finishing mower attachment, remove any other attachment from the tractor.
- 2. Be sure tractor is parked and brake set in level area.

ATTACHING FINISHING MOWER TO TRACTOR

- 1. Move tractor hydraulic lift lever to float position.
- 2. Loosen away chains if your tractor has three-point hitch.
- 3. Assemble tractor lower lift arms to hitch pins on finishing mower.
- 4. Assemble PTO Shaft to tractor PTO and secure.
- 5. Assemble the tractor top-link to the swivel hitch (top of three-point hitch).

MOWER DECK HEIGHT ADJUSTMENT

To determine mower height, move tractor lift control lever to position mower at desired height. Position front and rear caster wheels to support mower at desired cutting height by removing or adding spacers.

NOTE: ALWAYS HAVE ALL CASTER WHEELS ADJUSTED TO SAME HEIGHT.

OPERATION

Your finishing mower is designed to operate at 540 RPM rear PTO speed. If your tractor is equipped with a multi-speed rear PTO, the PTO lever must be set for 540 RPM.

Tractor rear PTO lever should always be in off position before starting tractor.

**BE FAMILIAR WITH ALL CAUTION DECALS ON
MOWER. FOLLOW ALL INSTRUCTIONS!
PRACTICE SAFETY! BE ALERT!**

CAUTION

BEFORE USING, READ OWNERS MANUAL

1. Allow **NO RIDERS** on Rotary Cutter or tractor.
2. Operate only at **SAFE DISTANCE** from bystanders.
3. **STOP POWER TAKE — OFF** before dismounting tractor.
4. **Keep FEET AND HANDS** from under cutter at all times.
5. Keep all **SAFETY SHIELDS** in place.
6. Use **EXTRA CAUTION** when operating on rough terrain and in areas where rocks or debris are present.

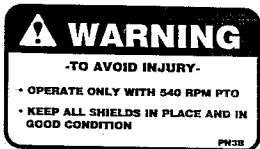
BEFORE OPERATING: Service machine thoroughly to **PROTECT** your WARRANTY. Fill gear box to proper level with EP-90W or equivalent.

BE CAREFUL!!!

WARNING

ALL ROTARY CUTTERS HAVE THE ABILITY TO DISCHARGE OBJECTS AT HIGH SPEEDS, WHICH COULD RESULT IN SERIOUS INJURY TO BY-STANDERS OR PASSERS-BY. USE WITH EXTREME CAUTION!

THEREFORE, THIS CUTTER IS NOT TO BE OPERATED ALONG HIGHWAYS OR IN ANY AREA WHERE PEOPLE MAY BE PRESENT UNLESS ALL SIDES OF THE UNIT ARE ENCLOSED BY PERMANENT BANDS, SAFETY CHAINS, OR OTHER FACTORY APPROVED SAFETY SHIELDS THAT ARE IN GOOD REPAIR.



NOTE: Physical damage to by-standers and objects hit by debris, such as: rocks, wire, metal, wood, etc., thrown by the Big-Bee Finishing Mower is not the fault of the mower. It is the fault of the operator because instructions have not been followed. Clearing the area before the mower is used is very important.

OPERATION

Your Finishing Mower is designed to operate at 540 RPM PTO speed. If your tractor is equipped with a multi-speed rear PTO, the PTO lever must be set for 540 RPM.

Tractor Rear PTO lever should always be in off position before starting tractor.

The lift control lever for the tractor three point lift system is used to raise and lower your rear mounted Finishing Mower. Read your tractor manual for lift control operation.

The tractor rear PTO should be disengaged (off) and mower raised when driving tractor and mower from one location to another.

CAUTION

Special care should be taken to release tractor clutch slowly and smoothly and to accelerate tractor slowly when transporting mower. If special care is not taken, the overhanging weight of the mower behind the rear wheels of the tractor can cause front tractor wheels to raise from the ground and possible loss of control of the tractor.

Your Finishing Mower is engaged and disengaged through use of the tractor PTO control lever. See your tractor manual for PTO control lever operation. Tractor engine throttle should be advanced to approximately half throttle before engaging mower.

CAUTION

SET PARKING BRAKE, SHUT OFF TRACTOR AND REMOVE KEY BEFORE MAKING ADJUSTMENTS. Average cutting height is approximately 2" to 2 1/2". Height of cut can be adjusted by removing or adding spacers to gauge wheels.



Rotating blades and belts can be hazardous. Keep hands and feet from under mower.

TROUBLE SHOOTING

1. Mowing Height Irregular:
 - A. Check leveling link on tractor lift arms.
 - B. Check tail wheels to be at same adjustments.
 - C. Ground speed too fast.
 - D. Over lap is not great enough.
 - E. Blade slipping-STOP engine, check blade bolt.
 - F. Belt slipping-STOP engine, check idlers and pulleys.
2. Scalping: Set on flat surface, level front and rear deck by lowering or raising front and rear wheels to level unit.
3. PTO Shaft:
 - A. Determine length needed.
 - B. Cut same amount from both ends.
 - C. Cut $\frac{1}{2}$ " segments off each end until desired length is obtained. NOTE: Correct length is for PTO to be engaged by 3" at long point and to back 1 $\frac{1}{2}$ " of male and female ends. Making contact when PTO Shaft is at shortest point. To determine longest and shortest point of PTO position, be sure tractor PTO lever is in neutral position, raise and lower the mower and note the position of the PTO Shaft.
4. Blades Not Turning:
 - A. Check shear bolt in PTO Shaft.
 - B. Check for broken belt.

WARRANTY

Each new Big-Bee Finishing Mower is warranted against defects in material or workmanship for a period of 90 days or a reasonable period of time dependent upon the type of use of the machine.

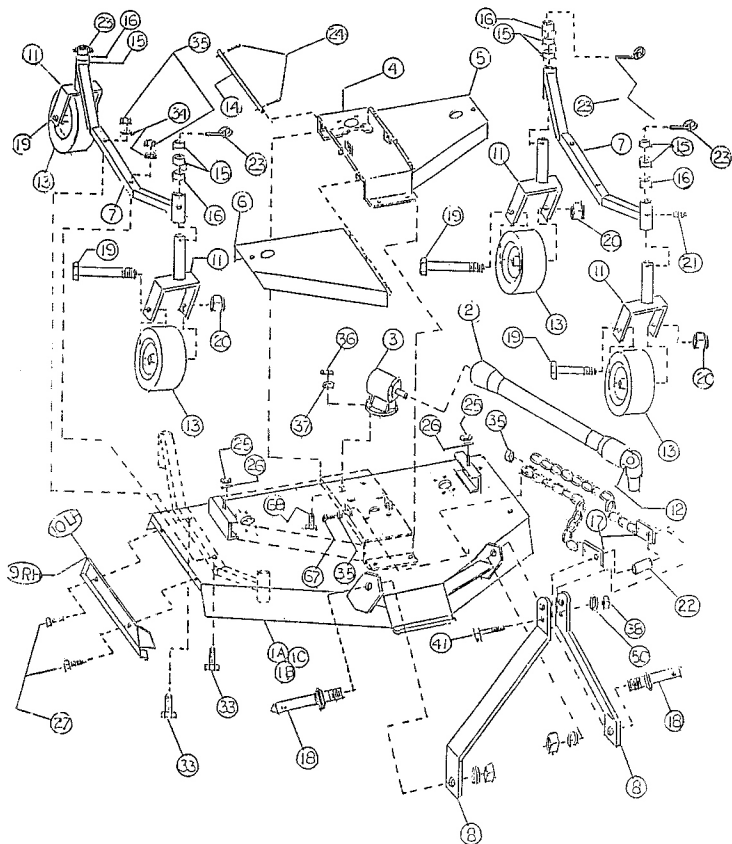
In the event it is necessary to replace or repair any part(s) during the warranty period, go to your dealer with the defective part for assistance in securing the needed replacement, or return the defective part(s) to DHE-Warranty Division, P.O. Box 140, Red Bay, AL 35582. (DHE being the Distributor of the Big-Bee Finishing Mower.)

Neither manufacturers, dealers, or distributors shall be responsible for loss of use of the machine, loss of time, inconvenience, commercial loss, or consequential damage.

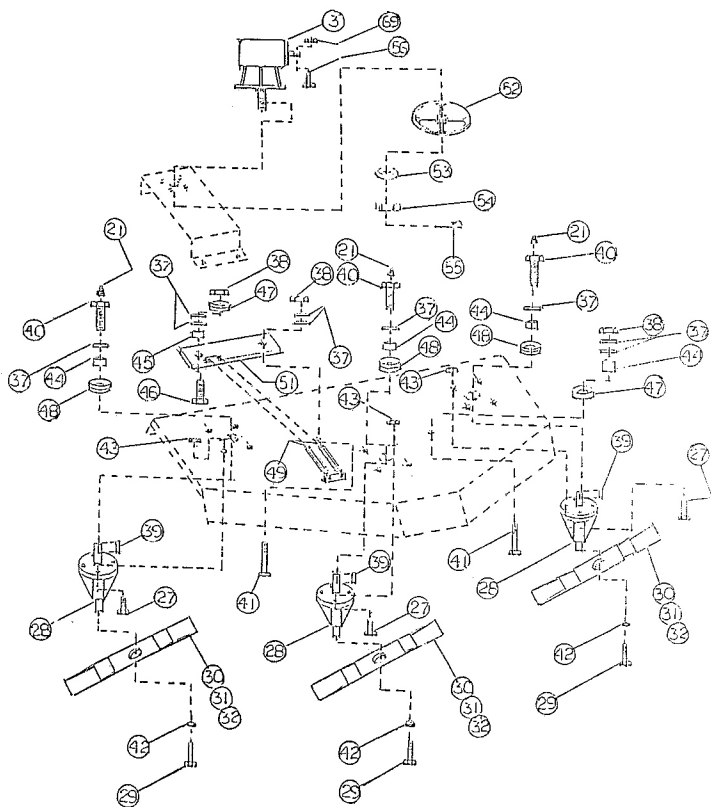
In order for your Big-Bee Finishing Mower to be covered by our Warranty policy, the equipment registration form on the back cover must be completed and returned within ten (10) days after purchase date.

The Warranty policy is not effective unless the equipment registration is recorded in our office.

HOUSING ASSEMBLY



DRIVE ASSEMBLY



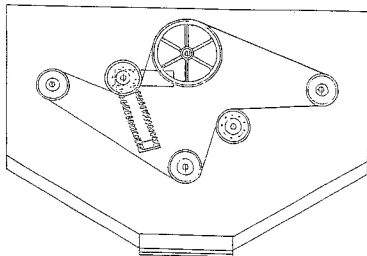
Reference Number	Parts Number	Description
1A	FM06-1B	Main Deck 46" FM
1B	FM06-2B	Main Deck 60" FM
1C	FM06-3B	Main Deck 72" FM
1D	FM06-4B	Main Deck 84" FM
2	FM00-01	PTO Shaft Series 4 84 long
3	FM00-02	40 horsepower gearbox 1.92 – 1 increase special call
4A	FM00-43-4	48" 40 horsepower gearbox mount
4B	FM00-43-5	60" 40 horsepower gearbox mount
4C	FM00-43-6	72" 40 horsepower gearbox mount
4D	FM00-43-7	84" 40 horsepower gearbox mount
5A	FM00-66-4	48" Cover L.H.
5B	FM00-66-5	60" Cover L.H.
5C	FM00-66-6	72" Cover L.H.
5D	FM00-66-7	84" Cover L.H.
6A	FM00-65-4	48" Cover R.H.
6B	FM00-65-5	60" Cover R.H.
6C	FM00-65-6	72" Cover R.H.
6D	FM00-65-7	84" Cover R.H.
7A	FM00-08-4	48" Front and Rear Wheel Support
7B	FM00-08-5-6	60" and 72" Front and Rear Wheel Support
7C	FM00-08-7	84" Front and Rear Wheel Support
8	FM00-20	Front A Frame

9A	FM00-7A-4	48" Right side cover and slide
9B	FM00-7A-5	60" Right side cover and slide
9C	FM00-7A-6	72" Right side cover and slide
9D	FM00-7A-7	84" Right side cover and slide
10A	FM00-07-4	48" Left side cover and slide
10B	FM00-07-5	60" Left side cover and slide
10C	FM00-07-6	72" Left side cover and slide
10D	Fm00-07-7	84" Left side cover and slide
11	FM00-13	Wheel fork
12	FM00-74	U-joint assembly for PTO
13	FM00-14	Wheel, tire and rim
14	FM00-67	Lid Hinge pin
15	FM00-11	Spacer 1 3/4" OD x 1 5/16" ID x 1/2"
16	FM00-12	Spacer 1 3/4" OD x 1 5/16" ID x 3/4"
17A	FM00-23-4	48" Check Chain
17B	FM00-23-5	60" Check Chain
17C	FM00-23-6	72" Check Chain
17D	FM00-23-7	84" Check Chain
18	FM00-28	Category I Lift Pin (comp.)
19	FM00-40	1" x 7 1/2" NC Axle Bolt
20	FM00-41	1" NYLOC Axle Bolt
21	FM00-09	5/16" Drive – in zerk fitting
21A	FM0-09-1	New Style Metric Zerk fitting
22	FM00-46	A Frame Spacer
23	FM00-10	Lynch Pin 3/8"
24	FM00-18	Cotter Key 1" x 1/8"
25	FM00-68	3/8" Wing Nut
26	FM00-69	3/8" Flat Washer
27	FM00-52	7/16" x 1/4" NC Bolt
28	FM00-05	Spindle Blade Carrier
29	FM00-4F	Blade bolt left hand thread SAE 1/2 x 1
30	FM04-1A	Blade 19" (48" finishing mower)
31	FM04-2A	Blade 20" (60" finishing mower)
32A	FM04-3A	Blade 25" (72" finishing mower)
32B	FM00-4A	Blade 27" (84" finishing mower)
33	FM00-58	1/2" x 3" NC bolt
34	FM00-70	1/2" lock washer
35	FM00-59	1/2" NC Nut
36	FM00-31	5/8" SAE Nut
37	FM00-32	5/8" Flat Washer
38	FM00-33	5/8" Nut NC
39	FM00-34	1/4" x 1" Key Stock

40	FM00-47	5/8" x 1" Bolt NC
40A	FM00-47-1	New Style Spindle Nut
41	FM00-54	5/8" x 1/4" NC Bolt
42	FM00-71	1/2" Flat Washer
43	FM00-53	7/16" NC Nut
44	FM00-61	11/16" ID x 1 5/8" OD x 1 3/4" long
45	FM00-45	11/16" ID x 1 5/8" OD x 1/4" long
46	FM00-57	5/8" x 1 1/2" NC Bolt
47A	FM00-45	Idler Pulley with Bearings
47B	FM00-44-7	84" Double Groove Spindle Pulley
48A	FM00-44	Spindle Pulley Cast Iron
48B	FM00-44-7	84" Double Groove Spindle
49	FM00-27	Idler Tension Spring
50	FM00-72	5/8" Lock Washer
51	FM00-39	Tension Idler Bracket
52A	FM00-42-7	84" 11.4" Double Main Drive Pulley Splined
53	FM00-53	Gear Box Pulley Washer
54	FM00-50	Gear Box Pulley Nut
56	FM00-29	Shear Bolt 1/2" x 3" NC
57A	FM62-1C	Main Drive Belt (48" FM)
57B	FM62-2C	Main Drive Belt (60" FM)
57C	FM62-3C	Main Drive Belt (72" FM)
57D	FM62-4C	Main Drive Belt (84" FM)
67	FM00-73	1/2" x 1/4" SAE Bolt
68	FM00-30	5/8" x 2" SAE Bolt
69	FM00-29A	Shear Bolt Nut 1/2" NC
70	FM00-75	Decal – (Caution)
71	FM00-76	Decal – (Maintenance)
72	FM00-77	Decal – (Company Name)
73	FM00-78	Decal – (Warning)
74	FM00-79	Decal – (Danger)
75	FM00-80	Decal – (60" FM) Size
76	FM00-81	Decal – (60" FM) Size
77	FM00-82	Decal – (72" FM) Size
78	FM00-83	Decal – (84" FM) Size
79	FM00-84	Decal – Warning
80A	FM00-85-4	48" FM Decal Set
80B	FM00-85-5	60" FM Decal Set
80C	FM00-85-6	72" FM Decal Set
80D	FM00-85-7	84" FM Decal Set

Belt Diagram

Part No.	Length	Qty.
FM62-1C Belt	48" FM	1
FM62-2C Belt	60" FM	1
FM62-3C Belt	72" FM	1
FM62-4C Belt	84" FM	2



Owners Registration

FRONT

Owners Name _____

Street Address _____

Town _____

Purchased From _____

Street Address _____

Town _____ County _____ State _____

Date Purchased _____

Date _____ Owners Signature _____

Model _____

Equipment Name _____

Size _____