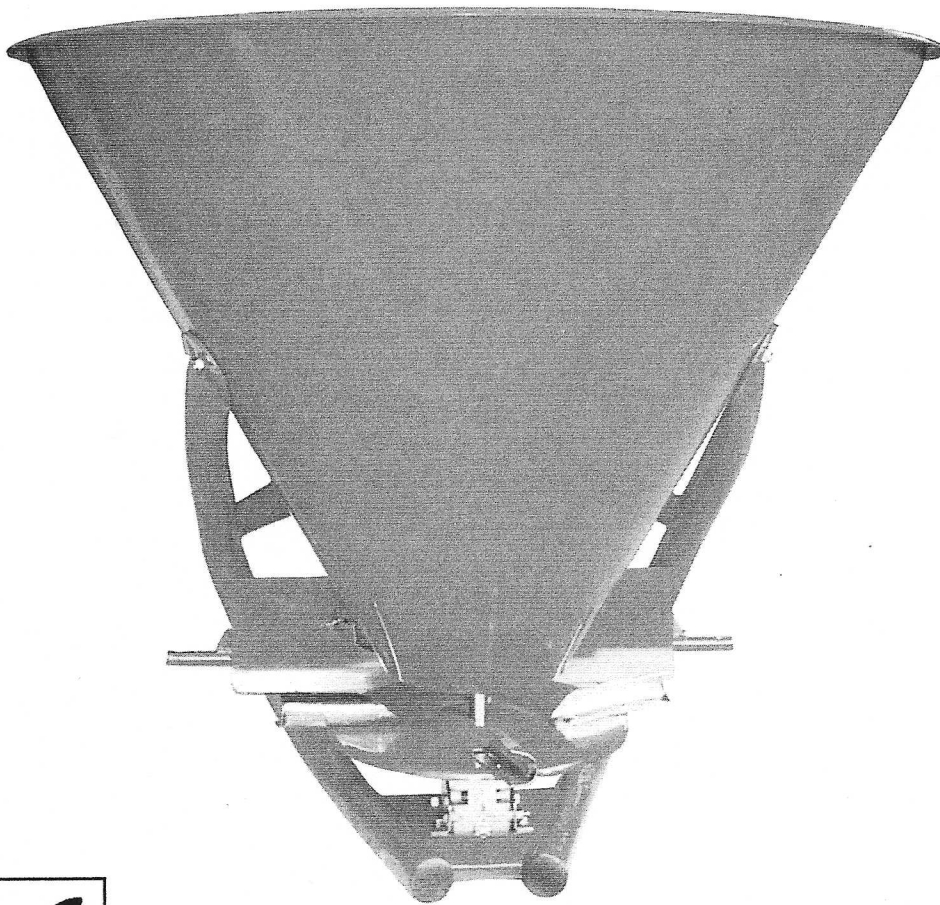


ALLIGATOR 1000



**Model CN FERTILIZER SPREADER
OPERATOR'S MANUAL - SPARE PARTS LIST**

SAFETY ADVICE

Carefully read this manual. Learn how to operate this machine safely.



This safety alert symbol is used throughout this manual to inform you of the possibility of personal injury.

Do not let anyone operate this machine without proper instructions.

Unauthorized modification to the machine may impair the function and/or safety of the machine and reduce machine life.

STAY CLEAR OF ROTATING DRIVELINE



Entanglement in rotating driveline can cause serious injury or death. Disengage PTO, engage parking brake or place transmission in "park", shut off the tractor and remove the key before:

- Attaching or detaching driveline.
- Making adjustments or servicing the machine.
- Cleaning the machine.

PROTECT CHILDREN AND BYSTANDERS



- Never operate the machine near people or pets.
- Do not let anybody stand near the machine while the spreading disc is spinning.
- Do not allow children to operate tractor or machine.
- Keep riders off. Riders are subject to injury and obstruct operator's view.

OPERATE TRACTOR AND MACHINE SAFELY



- Keep all guards and shields in place.
- Keep hands, feet and clothing away from the machine when the disc is turning.
- Disengage the machine and carefully look behind before backing up.
- During transport: disengage PTO, fully raise the machine and lock rockshaft control lever, beware of traffic on public roads.

CAUTION: DO NOT OPERATE THE TRACTOR AND MACHINE



**WHEN YOU ARE TIRED OR WHEN USING MEDICATION,
PERSONAL INJURY OR DEATH CAN OCCUR.**

The following **SPREADING TABLE** will give you only general indications of spreading possibility because it may change considerably in presence of external factors such wind, moisture of fertilizer, etc. The experience of the operator with the machine and fertilizer's type used will determine the adjustment factors.

| | TRACTOR SPEED (MPH) | SPREAD WIDTH (FEET) | QUANTITY SPREAD IN LBS./ACRE AT VARIOUS GATE SETTINGS | | | | | | | |
|-------------------|---------------------------|---------------------------|--|-----|-----|-----|------|------|------|------|
| | | | 2 | 3 | 4 | 5 | 6 | 7 | 8 | 8,5 |
| LARGE | 2,5 | 60 | 132 | 245 | 402 | 635 | 929 | 1014 | 1140 | 1248 |
| GRANULAR | 5,0 | | 66 | 123 | 201 | 318 | 465 | 507 | 570 | 624 |
| FERTILIZER | 7,5 | | 44 | 82 | 134 | 212 | 310 | 338 | 380 | 416 |
| MEDIUM | 2,5 | 53 | | 311 | 448 | 709 | 925 | 1025 | 1118 | 1182 |
| GRANULAR | 5,0 | | | 156 | 224 | 355 | 463 | 513 | 559 | 591 |
| FERTILIZER | 7,5 | | | 104 | 149 | 237 | 309 | 342 | 373 | 394 |
| FINE | 2,5 | 40 | 112 | 189 | 322 | 529 | 747 | 842 | 963 | 1051 |
| GRANULAR | 5,0 | | 56 | 95 | 166 | 265 | 374 | 421 | 482 | 526 |
| FERTILIZER | 7,5 | | 37 | 63 | 111 | 177 | 249 | 280 | 321 | 351 |
| CRYSTAL. | 2,5 | 23 | 226 | 368 | 560 | 890 | 1236 | 1354 | 1522 | 1632 |
| (AMMON. | 5,0 | | 113 | 184 | 280 | 445 | 618 | 677 | 761 | 816 |
| SULPHATE) | 7,5 | | 75 | 123 | 187 | 297 | 412 | 451 | 507 | 544 |
| THOMAS | | 20 | | | | | | | | |
| MEAL | 4,0 | | | | 571 | | 1270 | | 1685 | |
| (BASIC | 8,0 | | | | 286 | | 635 | | 843 | |
| SLAG) | | | | | | | | | | |

MAINTENANCE

Important advice: after every use of the machine wash and dry the hopper inside and remove all the fertilizer wastes from the operating parts.

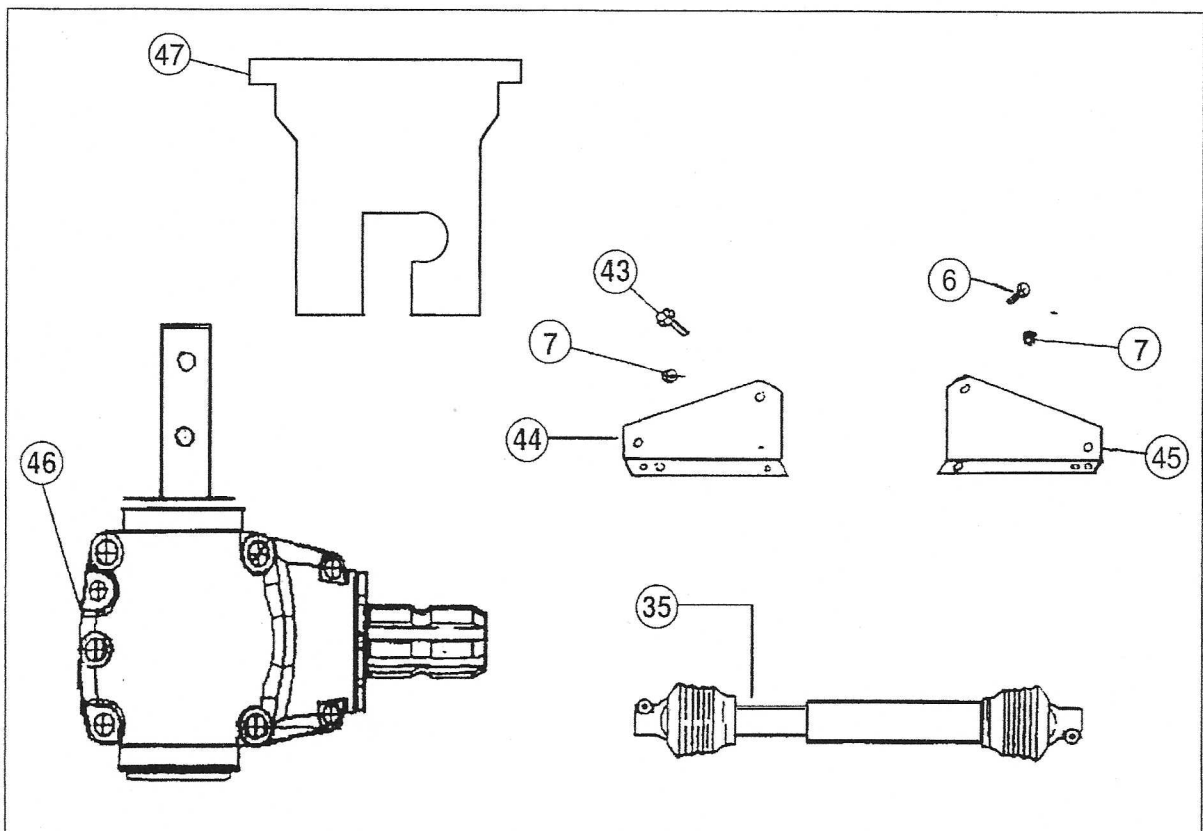
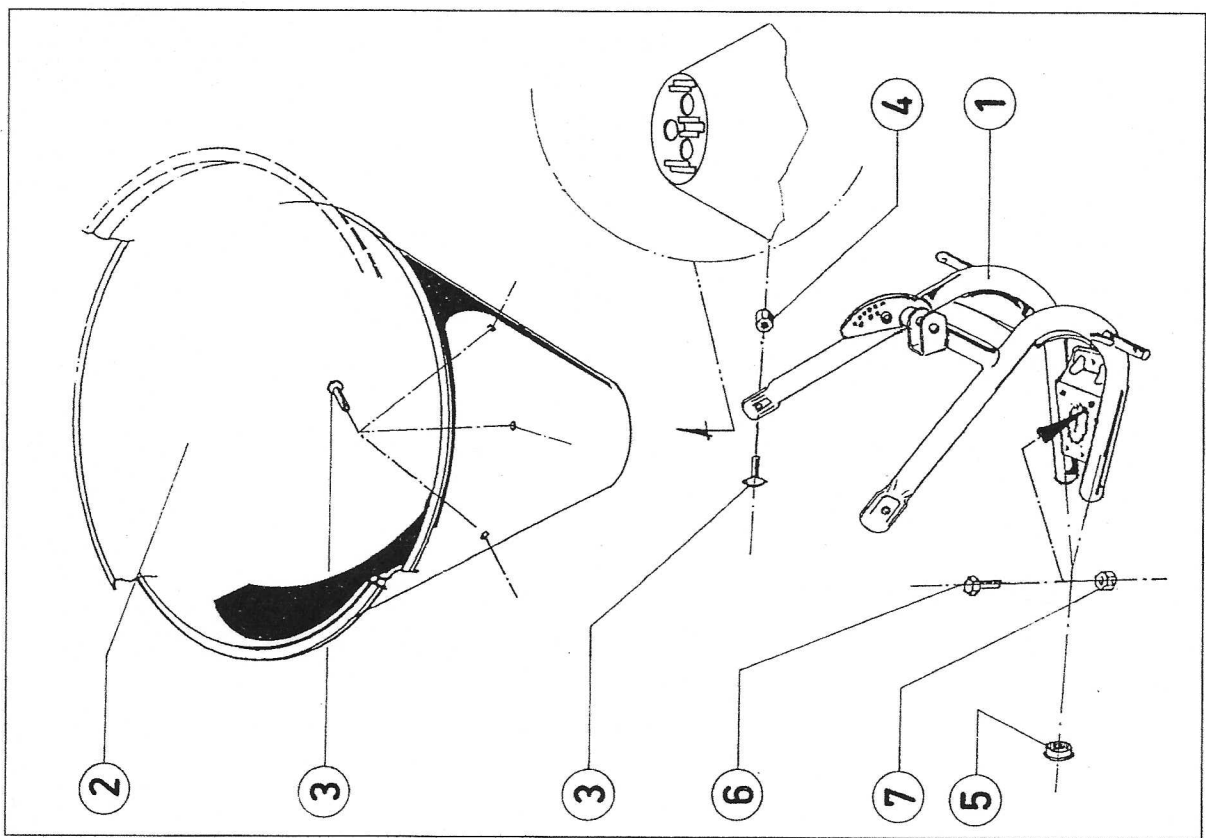
This machine is designed to require minimum lubrication. However, lubrication is the insurance against unnecessary downtime and repairs and greatly increases the life of the machine as well as the PTO shaft.

Grease every 8 operating hours all hinge points, linkages, nipples of the machine and PTO shaft.

The Gearbox is charged with Grease and it is not necessary to add grease. After several years of use you may want to split the gearbox and remove old grease and charge with new grease. Use a good gasket material when putting the halves of the gearbox back together.

STORING

Before machine's storage wash the machine with hot water and soda and remove any trace of fertilizer, then dry with air jet and protect every metal part with good quality grease. Store the machine indoors.



COMPONENTS OF MACHINE:

- | | |
|---|------------------------------|
| 1) HOPPER | 5) HARDWARE BAG |
| 2) FRAME | 6) LEVERS ASSEMBLY |
| 3) GEAR BOX | 7) LOWER AGITATOR |
| 4) SPREADING DISC (WITH VANES) | 8) UPPER AGITATOR (OPTIONAL) |
| 9) PLASTIC CENTERING TOOL (ASSEMBLY TOOL FOR HEIGHT ADJUSTMENT OF GEAR BOX ON MODEL "CN" SPREADERS) | |

ASSEMBLY INSTRUCTION:

- Mount the gear box (3) to the frame (2) and set with bolts and nuts.
- Position the spreading disc (4) on the output shaft and secure with inner and outer roll pins.
- Slide the lever's shutters into the rails positioned at the hopper's bottom.
Assemble the hopper (1) to the frame with the three round cap bolts and nuts.
- Put the centering tool (9) in the central hole of the hopper hooking up the spreading assembly with its hook device.
- Tight all bolts and nuts of the groups gear box-frame and frame-hopper.
Take off the centering tool and set in the lower agitator.
- Fix the levers to the frame with proper bolt, nut and lock knob. When the levers (6) are in position "zero", regulate the nuts of the tie rods until the flowing holes are completely closed.

PTO SHAFT

Couple the PTO shaft to the tractor PTO.

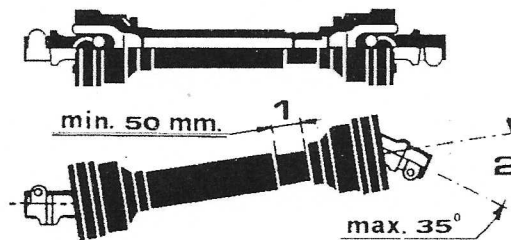
Before operating the PTO shaft, make sure the locks are properly engaged.

Modifying the PTO shaft to suit the tractor.:

before the first use check the length of the PTO shaft with the machine **raised** and **lowered**.

In the shortest possible operating position the minimum axial play must be 2 ins. (50 mm.) for free movement.

On the other hand there must be an overlap of at least 4 ins. (100 mm.).



If necessary shorten the PTO shaft as follows:

Cut the sections to the correct length, remove any burrs from the end of the tubes and grease the sliding surfaces.

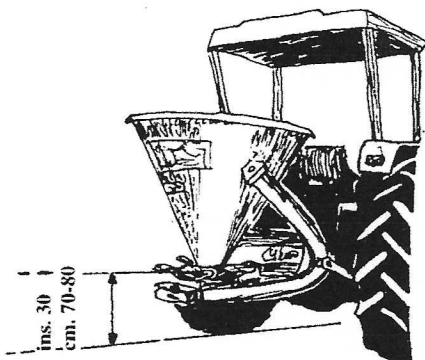
WARNING: angle of the shaft joints must **never exceed 35°**



Never remove the guards from PTO shaft.

OPERATIONS

Before using the fertilizer spreader make sure that the spreading disc is in horizontal position, by lengthening or shortening the tractor top link, at about 30 ins from the ground.



STOP THE TRACTOR ENGINE AND REMOVE THE KEY BEFORE ADJUSTING THE TRACTOR TOP LINK.

DELIVERY ADJUSTMENT

The quantity of fertilizer for spreading can be adjusted simply opening the two holes placed in the bottom of the hopper by the two levers (A - B) until the correct opening is reached.

Position "0" = CLOSED

Position "10" = OPEN

Normal spreading (both sides):

Move the two levers (A - B) joined by the knob (C)

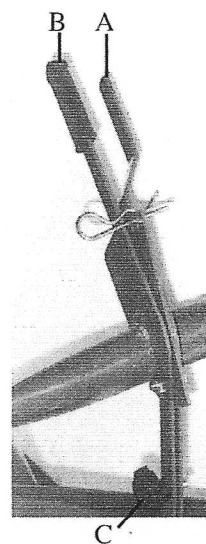
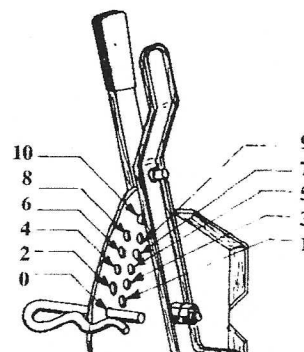
Spreading towards the left:

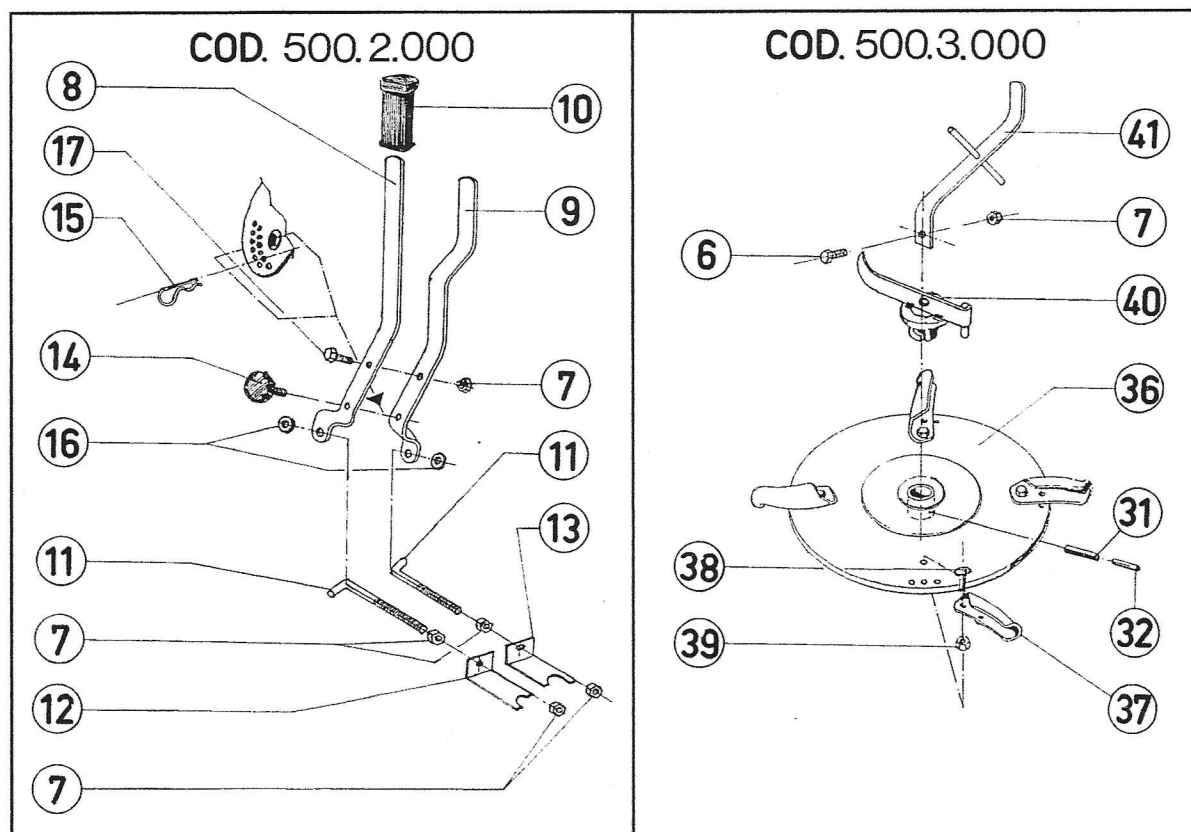
Move the right lever (B) to the position needed and move the left lever (A) to the position "0".

Spreading towards the right:

Move the left lever (A) to the position needed and move the right lever (B) to the position "0".

NOTE: because of the various specific gravities of fertilizers it may be needed to **adjust the spreading vanes**: moving the spreading vanes towards the left you will obtain more spreading to the right. Moving the spreading vanes towards the right you will obtain more spreading to the left.





SPARE PARTS LIST

| ITEM no. | PART no. | DESCRIPTION | Q.TY | ITEM no. | PART no. | DESCRIPTION | Q.TY |
|----------|------------|--------------------------|------|----------|------------|-------------------------|------|
| 1 | 500.00.001 | FRAME | 1 | 16 | 500.00.016 | WASHER 10.5 x 21 | 2 |
| 2 | 500.00.002 | HOPPER FOR CN50 | 1 | 17 | 500.00.017 | BOLT 10 x 30 | 1 |
| 2 | 400.00.002 | HOPPER FOR CN40 | 1 | 31 | 400.00.031 | ROLL PIN 8 x 40 | 2 |
| 2 | 250.00.002 | HOPPER FOR CN 25 | 1 | 32 | 250.00.032 | ROLL PIN 5 x 40 | 2 |
| 3 | 500.00.003 | SQUARE HEAD BOLT 10 x 20 | 3 | 35 | 500.00.035 | PTO SHAFT | 1 |
| 4 | 500.00.004 | NUT M10 | 3 | 36 | 500.00.036 | SPREADING DISC | 1 |
| 5 | 500.00.005 | PLASTIC CAP 60 x 2.5 | 2 | 37 | 500.00.037 | VANE | 4 |
| 6 | 500.00.006 | BOLT 10 x 20 | 5 | 38 | 500.00.038 | SQUARE HEAD BOLT 8 x 16 | 4 |
| 7 | 500.00.007 | SELF LOCK NUT M 10 | 10 | 39 | 500.00.039 | NUT M8 | 4 |
| 8 | 500.00.008 | RIGHT LEVER | 1 | 40 | 500.00.040 | LOWER AGITATOR | 1 |
| 9 | 500.00.009 | LEFT LEVER | 1 | 41 | 500.00.041 | UPPER AGITATOR | 1 |
| 10 | 500.00.010 | RUBBER HANDLE | 1 | 43 | 500.00.043 | BOLT 10 x 110 | 4 |
| 11 | 500.00.011 | TIE ROD | 2 | 44 | 500.00.044 | LEFT SUPPORT GEAR BOX | 2 |
| 12 | 500.00.012 | RIGHT SHUTTER | 1 | 45 | 500.00.045 | RIGHT SUPPORT GEAR BOX | 1 |
| 13 | 500.00.013 | LEFT SHUTTER | 1 | 46 | 500.00.046 | GEAR BOX | 1 |
| 14 | 500.00.014 | LOCK KNOB | 1 | 47 | 500.00.047 | PLASTIC CENTERING TOOL | 1 |
| 15 | 500.00.015 | R PIN DIA 4.5 | 1 | | | | 1 |